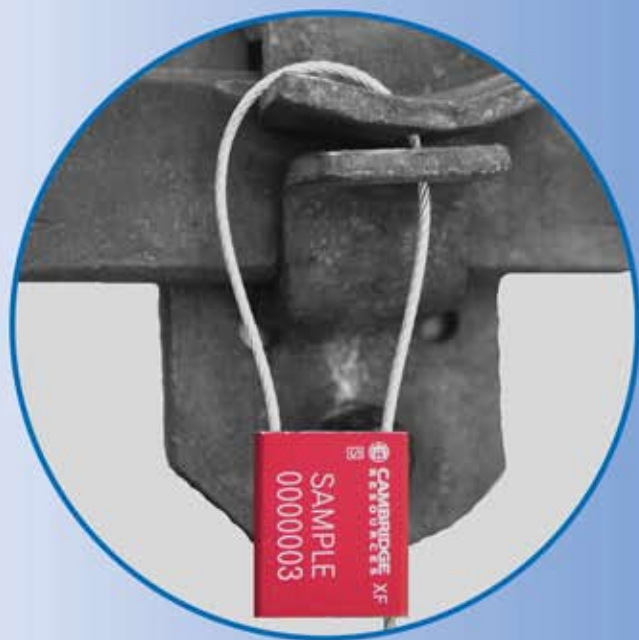




CAMBRIDGE SECURITY SEALS



Cable Seal

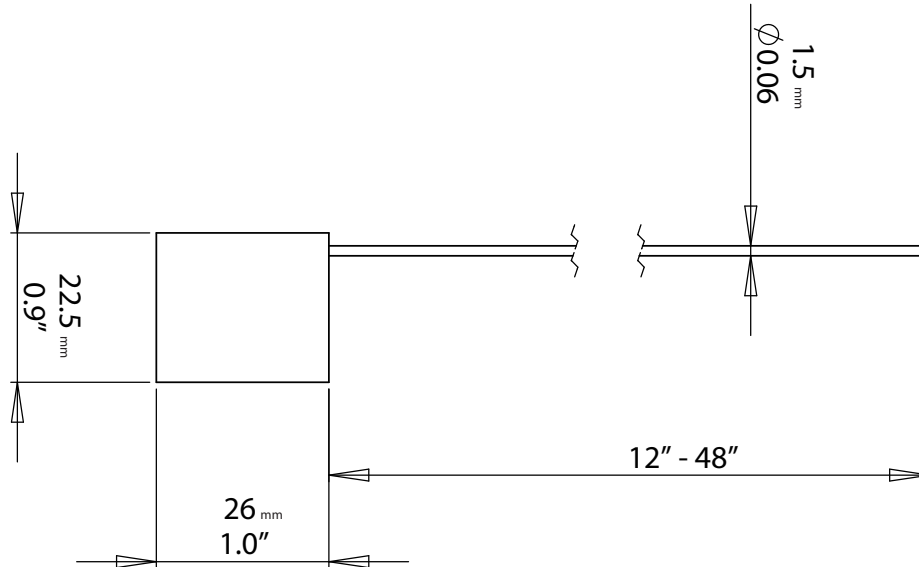
CAMBRIDGE RESOURCES
960 ALABAMA AVE
BROOKLYN, NY 11207
(877) 922 2538
INFO@CAMBRIDGESECURITYSEALS.COM

WWW.CAMBRIDGESECURITYSEALS.COM

CAB116CAM

CAB116CAM

CAB116CAM is a highly visible aluminum bodied cable seal with a tamper-proof 1/16" non-preformed galvanized cable.



Features:

- * Non – preformed galvanized cable unravels when cut to prevent resealing
- * Self - locking body requires no installation tools
- * Aluminum body for extended durability
- * Removal requires cable cutters
- * Anodized Aluminum bodies insure high visibility and easy readability

Applications:

- * Trailer doors
- * Bulk tankers
- * Railroad cars
- * Container doors

Materials:

- * Body: Aluminum
- * Cable: Non-preformed galvanized cable

Length:

- * 12" up to 48" available

Colors:

- * Red, Blue, Black, Green
- * Other colors available upon request

Customization:

- * Customer name and logo printing (laser)
- * Available in a variety of lengths
- * Laser printed with consecutive numbers
- * Bar coding (laser)
- * Packaging of seals (bundles, bags)

Packing:

10 seals per bundle
1000 seals per Master Carton

Box Dimensions:

Master Carton
13" X 8" X 8.5"

Gross Weight:

Master Carton
34 lbs.

SHOP ONLINE 
www.cambridgesecurityseals.com



960 Alabama Ave, Brooklyn, NY 11207
Ph: (718)927-0009 Fax: (718)485-4403
info@cambridgeresources.com
www.cambridgeresources.com